

The Ottawa Hospital Research Institute Research Day

Program

Nov 17-18, 2021



OHRI Research Day Program

Nov 17-18, 2021

Meeting link: <https://www.uncork-it-gather.com/OHRIResearchDay/>

Meeting tips: [How to Gather Guide](#)

Event hashtag: #OHResDay

Please respect unpublished data by not taking screenshots
or recordings during the meeting.

Wednesday, Nov 17, 2021

- 9:45 -11:15 AM** **Visit exhibitors and scavenger hunt** (90 minutes)
- 10:00 AM** **Poster Session A** (60 minutes)
- 1:15 -2:45 PM** **Visit exhibitors and scavenger hunt** (90 minutes)
- 1:30 PM** **Poster Session B** (60 minutes)

Thursday, Nov 18, 2021

- 8:15 AM** **Opening Remarks** (10 minutes)
Speakers: Paul Albert, Justin Pousseau, Duncan Stewart, Cameron Love, Alain Stintzi
- 8:29 AM** **Viral therapy and cancer** (50 Minutes)
(Talks: 9 minutes plus 3 minutes for questions)
Moderator: Gayashan Tennakoon
Nikolas Martin (John Bell group) *An oncolytic vaccinia virus encoding virus-like-particles and self-amplifying RNA replicons: Teaching new tricks to an old virus*
Jonathan Hodgins (Michele Ardolino group) *PD-L1 signaling boosts Warburg metabolism to enhance oncolytic virus infection*
Alvin Tieu (Duncan Stewart & Manoj Lalu groups) *Arming Vesiculovirus with SARS-CoV2 Spike Protein Creates a Murine Model of Severe COVID-19 ARDS*
Karine Tawagi (Michael Ong group) *Trends Among Patients Presenting to the Emergency Department or Admitted Following Immune Checkpoint Inhibitor Treatment*
- 9:23 AM** **Refreshment Break** (10 minutes)

<p>9:33 AM</p> <p>Underdiagnosis and undertreatment across the lifespan (50 Min) (Talks: 9 minutes, 3 minutes discussion) <i>Moderator: Madison Foster</i></p> <p>Therese Chan (Amy Hsu group) <i>Assessing the association between hearing impairment and mild cognitive impairment and dementia among older adults in the Canadian Longitudinal Study on Aging</i></p> <p>Alexa Grudzinski (Daniel McIsaac group) <i>Comparing the predictive accuracy of frailty instruments applied to preoperative electronic health data for adult patients undergoing non-cardiac surgery: a retrospective cohort study</i></p> <p>Chau Huynh (Shawn Aaron group) <i>Development and Validation of a Case-finding Questionnaire to Identify Undiagnosed Chronic Obstructive Pulmonary Disease (COPD) and Asthma</i></p> <p>Dilan Patel (Jeffrey Perry group) <i>Effectiveness of Peripheral Nerve Blocks for the Treatment of Primary Headache Disorders: A Systematic Review and Meta-Analysis</i></p>	<p>9:33 AM</p> <p>Signaling in health and disease (50 Min) (Talks: 9 minutes plus 3 minutes discussion) <i>Moderator: Niko Hensel</i> Sponsored by STEMCELL Technologies Location: Breakout room</p> <p>Uxia Gurriaran (Michael Rudnicki group) <i>Identification of the Wnt Signal Peptide that directs secretion in Extracellular Vesicles</i></p> <p>Chanèle Cyr-Depauw (Bernard Thébaud group) <i>Single-cell RNA sequencing analysis identifies unique transcriptome of therapeutic umbilical cord MSCs in a hyperoxic rodent model of bronchopulmonary dysplasia</i></p> <p>Jeff Li (Angela Crawley group) <i>Hedgehog signalling mediates interferon gamma expression in CD8+ T cells in HCV infection in advanced liver fibrosis</i></p> <p>Zeina Salloum (Xiaohui Zha group) <i>Reducing cholesterol in macrophages activates NF-κB through mitochondria, thereby reprogramming epigenome and dampening inflammatory responses</i></p>
--	--

10:27 AM Refreshment Break (5 minutes)

10:33 AM Dr. J. David Grimes Lecture (35 minutes plus 10 minutes discussion)
Moderator: Marc Carrier
Sponsored by Thermo Fisher Scientific
Understanding the variation in cardiovascular risk among First Nations communities in Canada
 Speaker: Sonia Anand

11:24 AM Refreshment Break (10 minutes)

11:34 AM Patient speaker (10 minutes)
Moderator: Carolyn Nessim
Sponsored by BD Life Sciences
 Bryde Fresque

11:45 PM Update from OHRI Equity, Diversity and Inclusion Council (5 minutes)
 Speaker: EDI Council Chairs Kednapa Thavorn, Manish Sood

11:51 AM Lunch Break (30 minutes)
Sponsored by Bio-Rad

- 12:21 PM Elevator Pitch Competition (60 minutes)**
6 projects: 3 minutes and 1 slide. Can they show their impact?
Sponsored by CCRM
(Pitches: 3 minutes each)
Moderator: Leah Labib
Judges: Rob White, Hallie Cotnam, Daniel MacMillan, Kumanan Wilson, Melanie Clement, Sujatha Kumarswami
- **Emma Gerber (Benjamin Tsang group)** *Ovarian cancer: catching the silent killer*
 - **Anupam Sharma (Lynn Megeney group)** *A magic bullet to fix the heart*
 - **Lauren Kreps (Christina Addison group)** *Chemotherapy: a fatty bone to pick*
 - **Grace Fox (Dean Fergusson & Manoj Lalu groups)** *Recognizing patients as partners in research*
 - **Mawaia Elkbouli (Duncan Stewart group)** *"Smacules" as a promising regenerative therapy*
 - **Sarah Larrigan (Pierre Mattar group)** *What a rare syndrome tells us about brain development*
- 1:22 PM Refreshment Break (10 minutes)**
- 1:32 PM Elevator Pitch Competition award winners announced**
Leah Labib
- 1:33 PM Special message from Vera Etches**
- 1:34 PM COVID-19 and cancer: emerging research in treatment and care (50 min)**
(Talks: 9 minutes plus 3 minutes discussion)
Moderator: Daniel El Koadi
Aidan Kirkham (David Allan group) *Mesenchymal stromal cells as a therapeutic intervention for COVID-19: First iteration of a living systematic review and meta-analysis*
Abigail Ross (Darine El-Chaâr group) *The psychological impact of universal SARS-CoV-2 testing on obstetric patients and healthcare workers at The Ottawa Hospital*
Zaid Taha (Jean-Simon Diallo group) *Nanoluciferase complementation-based bioreporter drug screen identifies SARS-CoV-2 blocking agent*
Chloe Thabet (Paul Wheatley-Price group) *Medical Assistance in Dying (MAiD) in patients with Cancer*
- 2:30 PM Refreshment Break (10 minutes)**
- 2:40 PM Keynote Lecture (35 minutes plus 10 minutes discussion)**
Moderator: Bernard Thébaud
Sponsored by 10x Genomics
Intersecting Pathways in the Pathogenesis of Pulmonary Arterial Hypertension
Speaker: Marlene Rabinovitch
- 3:30 PM Refreshment Break (5 minutes)**

3:35 PM Neural mechanisms of disease and

treatment (50 Minutes)

(Talks: 9 minutes plus 3 minutes discussion)

Moderator: Skyra Cheng

Terry Suk (Maxime Rousseaux group) *Determining the role of TDP-43 SUMOylation in Amyotrophic Lateral Sclerosis.*

Aoife Reilly (Rashmi Kothary group) *Centrally and peripherally delivered AAV9-SMN gene replacement therapy are both efficient but target different pathomechanisms in a mouse model of SMA*

Min Zhang (Paul Albert group) *Treatment of Post-Stroke Depression via Optogenetic Stimulation Under Acute and Persistent Timeframes in a Mouse Model*

Edward Sun (Jing Wang group) *Hypothalamic neuronal projections to the subventricular zone neurogenic niche regulate neural stem/progenitor cell function through endocannabinoid signaling*

4:30 PM **Dr. Ronald G. Worton Researcher in Training Award Winner** (10 minutes) **Sponsored by Beckman Coulter Life Sciences**

Moderator: Benjamin Tsang

Speaker: Meshach Asare-Werehene

4:40 PM **Closing remarks** (2 minutes)

Speakers: Paul Albert, Justin Presseau

Thank you to our supporters:



Keynotes

Dr. J. David Grimes Lecture



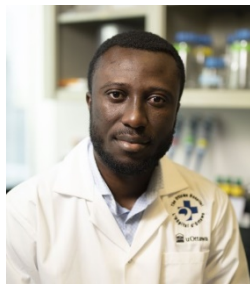
Dr. [Sonia Anand](#) is a professor of medicine and epidemiology at McMaster University. She is the Director of the Chanchlani Research Centre focused on Health Equity Research, and a senior scientist at the Population Health Research Institute. She holds the Canada Research Chair in Ethnic Diversity and Cardiovascular Disease and the Heart and Stroke Foundation of Ontario/Michael G. DeGroot Chair in Population Health Research. Her present research focuses upon the environmental and genetic determinants of vascular disease in populations of varying ancestral origin, and women and cardiovascular disease.

Keynote Lecture



Dr. [Marlene Rabinovitch](#) is the Dwight and Vera Dunlevie Professor of Pediatric Cardiology at Stanford University School of Medicine. She is currently the Director of the Basic Science and Engineering Initiative of the Betty Irene Moore Children's Heart Center at Stanford University, and the Associate Director in Basic Research at Stanford's Cardiovascular Institute. Her research focuses on uncovering fundamental genetic, metabolic, and inflammatory mechanisms causing pulmonary hypertension that can be translated to the clinic.

Worton Award Winner Presentation



Dr. Meshach Asare-Werehene received the 2021 Worton Researcher in Training Award in recognition of his cutting-edge discoveries and extraordinary leadership. During his PhD, Dr. Asare-Werehene made an important discovery that could improve both the detection and treatment of ovarian cancer. He found that chemo-resistant ovarian cancer cells produce large amounts of a protein called plasma gelsolin, which prevents cancer-killing immune cells from doing their job. In addition, plasma gelsolin was better at detecting early-stage ovarian cancer than the commonly used cancer antigen 125.

Patient Guest Speaker



[Bryde Fresque](#) needed a skilled team and a complex surgery to come up with a diagnosis of pheochromocytoma— a rare tumour that left his future uncertain. He's thankful for the skilled team of experts at The Ottawa Hospital that saved his life. While his recovery took time, he's back to living his active life and truly grateful for the care he received. Bryde is seven years post surgery, and cancer free, with no signs of recurrence.

Poster Presentations

- P-1 **A positive allosteric modulator of M1 Acetylcholine receptors improves pathology and cognitive deficits in female APP^{swe}/PSEN1^{E9} mice**
Khaled Abdelrahman
Supervisor: Ferguson, Stephen
- P-2 **Are Sequential Compression Devices Routinely Necessary Following Enhanced Recovery After Thoracic Surgery?**
Sami Aftab Abdul
Supervisor: Maziak, Donna
- P-3 **Loss of SOX10 enriches for the cancer stem cell niche in melanoma**
John Abou-Hamad
Supervisor: Sabourin, Luc
- P-4 **The Eastern Ontario COVID-19 Community Mental Health Cohort Study: A 6 month analysis of depression and substance use**
Chloe Ahluwalia
Supervisor: Hatcher, Simon
- P-5 **Clinicopathological features of pulmonary mucinous adenocarcinoma: A descriptive analysis**
Deborah Akurang
Supervisor: Wheatley-Price, Paul
- P-6 **Can oncoplastic breast surgery impact radiotherapy treatment planning?**
Ghada Aldosary
Supervisor: Vandervoort, Eric
- P-7 **Impact of vanadium-enhanced oncolytic virus immunotherapy on the anti-tumor immune response**
Nouf Alluqmani
Supervisor: Diallo, Jean-Simon
- P-8 **DMF improves Oncolytic HSV-1 in Cancer**
Akram Alwithenani
Supervisor: Diallo, Jean-Simon
- P-9 **Evaluating the synergistic effect of MG1 infection and SMAC mimetic treatment on latently HIV-infected cells**
Yasmeen Ameeriar
Supervisor: Angel, Jonathan
- P-10 **An investigation into the differential expression of NMDA receptor subunits in the spinal dorsal horn across development, sex, and species**
Jennifer Armstrong
Supervisor: Hildebrand, Michael
- P-11 **Detection of ovarian cancer chemoresistance using a novel switch sensor and artificial intelligence**
Meshach Asare-Werehene
Supervisor: Tsang, Benjamin

- P-12 **Innate lymphoid cell frequencies in the murine female reproductive system decrease post-ovulation**
Sara Asif
Supervisor: Ardolino, Michele and Vanderhyden, Barbara
- P-13 **Salivary Gland Carcinoma Management and Outcomes in Northeastern Ontario – A Population Based Study**
Samy Asraoui
Supervisor: El-Sayed, Samy
- P-14 **The use of transthoracic echocardiograms in hospitalized adult patients with acute pulmonary embolism**
Bitra Azad
Supervisor: Siegal, Deborah
- P-15 **Nanoluciferase complementation-based bioreporter reveals the importance of N-linked glycosylation of SARS-CoV-2 S for viral entry**
Taha Azad
Supervisor: Bell, John
- P-16 **Barriers and facilitators to frailty-focused exercise prehabilitation before cancer surgery**
Keely Barnes
Supervisor: McIsaac, Daniel
- P-17 **Does the Time of Day at Which Endocrine Therapy Is Taken Affect Breast Cancer Patient Outcomes?**
Ana Beltran-Bless
Supervisor: Clemons, Mark
- P-18 **Targeting the GPR84 receptor to prevent AKI**
Amélie Blais
Supervisor: Kennedy, Christopher
- P-19 **Assessment of vascularization and neurogenesis in an iPSC-derived 16p11.2 deletion organoid model.**
Nicole Blakeley
Supervisor: Lacoste, Baptiste
- P-20 **Newborn sample collection and analysis from international low-resource settings: process evaluation and potential for broader screening initiatives using dried blood spots**
Brianna Bota
Supervisor: Wilson, Kumanan
- P-21 **Time to update evidence-based guideline recommendations about concurrent tamoxifen and antidepressant use? A systematic review**
Michelle Bradbury
Supervisor: Clemons, Mark
- P-22 **Cellular and molecular features of TSC2 null neural crest cells demonstrate characteristics of pulmonary lymphangiomyomatosis**
Alberto Camacho
Supervisor: Stanford, William
- P-23 **Establishing an Objective Cardiac Risk Stratification Criteria Based on Patient History**
Zhuo Qian Cao

Supervisor: Thiruganasambandamoorthy, Venkatesh

- P-24 **The Use of Intravenous Albumin During Kidney Replacement Therapy: A Survey of Nephrologists and Intensivists**
Ryan Chan
Supervisor: Clark, Edward
- P-25 **BAR-1/ β -catenin and PRY-1/Axin show asymmetric and complementary expression in neuroblasts during *C. elegans* ventral nerve cord assembly**
Wesley Chan
Supervisor: Colavita, Antonio
- P-26 **Identifying Effect Modifiers of CAR-T Cell Therapeutic Efficacy: A Systematic Review and Individual Participant Data Meta-Analysis**
Nikesh Chander
Supervisor: Fergusson, Dean &Lalu, Manoj
- P-27 **Suppression of necroptotic cell death ameliorates the SMA phenotype in *Smn2B^{-/-}* mice**
Loucia Chehade
Supervisor: Kothary, Rashmi
- P-28 **Cardiovascular risk health factors and disease among Canadian immigrants**
Kitty Chen
Supervisor: Manuel, Douglas
- P-29 **Assessment of Visual Function in a *Snf2h* Knockout Mouse Model of Retinal Degeneration**
Skyra Cheng
Supervisor: Tsilfidis, Catherine
- P-30 **Cisplatin versus Carboplatin Doublet Therapy in Extensive-Stage Small Cell Lung Cancer: Real-world Outcomes at The Ottawa Hospital**
Deepro Chowdhury
Supervisor: Wheatley-Price, Paul
- P-31 **Biodistribution of mesenchymal stromal cell-derived extracellular vesicles during acute respiratory distress syndrome**
Damian Chwastek
Supervisor: Lalu, Manoj
- P-32 **Characterizing transcriptomic changes during the development of pulmonary arterial hypertension using single cell RNA sequencing**
Nicholas Cober
Supervisor: Stewart, Duncan
- P-33 **A Descriptive Analysis of Stop the Spread Ottawa: Antibody Neutralization Efficiency and Cellular Immunity to SARS-CoV-2-Positive Individuals Identified in a Surveillance and Convalescence Survey of At-Risk Individuals**
Erin Collins/Rivard
Supervisor: Cooper, Curtis
- P-34 **Enhancing oncolytic vesicular stomatitis virus immunotherapy and viral replication with novel microRNA technology**

Mathieu Crupi
Supervisor: Bell, John

- P-35 **Derivation and external validation of a scoring system for the diagnosis of overlap syndromes**
Mohammad Alameen Damer
Supervisor: Cheung, Angela
- P-36 **Evaluation of the impact of integrated care and self-management after Deep Brain Stimulation in Parkinson's disease.**
Deepa Dash
Supervisor: Mestre, Tiago
- P-37 **Mapping the Planar Cell Polarity Pathway in Muscle Stem Cells**
David Datzkiw
Supervisor: Rudnicki, Michael
- P-38 **Arming oncolytic viruses with virus like particles for improved cancer therapy**
Jaahnavi Dave
Supervisor: Bell, John
- P-39 **The Characterization of SLK Kinase-Dead Mouse Embryonic Fibroblasts**
Samuel Delisle
Supervisor: Sabourin, Luc
- P-40 **SMN depletion has a differential effect on expression of IGF1, UBA1, and Trp53 in the CNS and peripheral tissues of a mouse model of Spinal Muscular Atrophy.**
Morgan Donoghue
Supervisor: Kothary, Rashmi
- P-42 **Optimization of Isolation and Collection Methods to Enhance the Potency of Small Extracellular Vesicles derived from Mesenchymal Stromal Cells for Treatment of Cardiovascular Diseases**
Mawaia Elkbouli
Supervisor: Stewart, Duncan
- P-43 **Examining fetal and post-natal muscle stem cell lineage specification in the healthy and dystrophin-deficient mouse**
Marie Esper
Supervisor: Rudnicki, Michael
- P-44 **Molecular regulation of fate decision in Sox9 skeletal stem cells**
Stephanie Farhat
Supervisor: Coutu, Daniel
- P-45 **The current landscape of systemic therapy for recurrent glioblastoma: A systematic review of randomized-controlled trials**
Francesco Fazzari
Supervisor: Ng, Terry
- P-46 **Determining the endogenous distribution, topography, and cells-of-origin of a-synuclein in relation to Parkinson's Disease**
Zoe Fisk

Supervisor: Rousseaux, Maxime

- P-47 **Assessing researcher and patient partner perspectives on patient engagement in preclinical laboratory research: An interview study**
Madison Foster
Supervisor: Lalu, Manoj
- P-48 **Exploring the IMPACT of patient engagement on health research in Ontario**
Grace Fox
Supervisor: Fergusson, Dean
- P-49 **Absence of FGL2 slows tumour growth by promoting infiltration of activated anti-tumour immune cells**
Kristianne Galpin
Supervisor: Vanderhyden, Barbara
- P-50 **Investigating the Role of Sox10 in HER2-positive Breast Cancer**
Brennan Garland
Supervisor: Sabourin, Luc
- P-51 **Constitutive nuclear accumulation of alpha-synuclein leads to motor dysfunction, cortical atrophy, and shortened lifespan in mice**
Haley Geertsma
Supervisor: Rousseaux, Maxime
- P-52 **Exploring the use of exosomal plasma gelsolin as a biomarker for the early diagnosis of ovarian cancer**
Emma Gerber
Supervisor: Tsang, Benjamin
- P-53 **DESIGNING AND EVALUATION OF A HIP DISARTICULATION PROSTHESIS SIMULATOR**
Hossein Gholizadeh
Supervisor: Lemaire, Edward
- P-54 **Expectation of benefit and perceived benefit by study participants in NILO-PD: a Randomized, Double-Blind, Placebo-Controlled, Phase IIa trial of Nilotinib in Parkinson's Disease (PD)**
Ryan Gotfrit
Supervisor: Mestre, Tiago
- P-55 **Evaluation of Novel TG2 Inhibitor Therapy in Preclinical Models of Ovarian Cancer**
Melanie Grondin
Supervisor: Vanderhyden, Barbara
- P-56 **Solving Wellness: An Initiative to Enhance Canadian Healthcare Provider Wellness**
Julia Hajjar
Supervisor: Kyeremanteng, Kwadwo
- P-57 **Single cell transcriptional and chromatin accessibility profiling of satellite cells lacking MyoD**
Bahareh Hekmatnejad
Supervisor: Rudnicki, Michael
- P-58 **Impairment of the neurotrophic signaling hub B-Raf contributes to motoneuron degeneration in spinal muscular atrophy**

Niko Hensel
Supervisor: Kothary, Rashmi

- P-59 **Postoperative transitions in care for older adults: a scoping review**
Emily Hladkowicz
Supervisor: Miller, Jordan; McIsaac, Daniel
- P-60 **Nox5 Expression Increases Extracellular Vesicle Formation and Oxidative Stress in Mice**
Chet Holterman
Supervisor: Kennedy, Christopher
- P-62 **Evaluating the Role of Transglutaminase 2 in Ovarian Cancer Epithelial-to-Mesenchymal Transition**
Dalia Ibrahim
Supervisor: Vanderhyden, Barbara
- P-63 **When and how to replicate systematic reviews: a systematic review**
Obi Ikeonu
Supervisor: Petkovic, Jennifer
- P-64 **Factors associated with screening mammography participation in Canadian women: a population-based cohort study**
Nayaar Islam
Supervisor: McInnes, Matthew
- P-66 **Human Adenovirus Requires Histone Methyltransferase SUV39H1 for Optimal Virus Replication**
Morgan Jennings
Supervisor: Parks, Robin
- P-67 **Cross-platform Development for a Walk Test Application**
Xiaoxi Jia
Supervisor: Lemaire, Edward
- P-68 **A Systematic Review of Percutaneous Ascending Aortic Pseudoaneurysm Repair**
Joanne Joseph
Supervisor: Hibbert, Benjamin
- P-69 **Lower limb amputee fall risk classification using automated foot strike detection from smartphone sensor signals during a 6MWT.**
Pascale Juneau
Supervisor: Lemaire, Edward
- P-70 **Evaluating the impact of peer review on the quality of reporting in imaging diagnostic test accuracy research: a cross-sectional study**
Sakib Kazi
Supervisor: McInnes, Matthew
- P-71 **Characterizing the role of Mixed Lineage Leukemia Partial Tandem Duplication leading and maintaining leukemogenesis in Acute Myeloid Leukemia**
Audrey Kopp
Supervisor: Brand, Marjorie

- P-72 **Patterns of Bone Marrow Adipogenesis in Response to Chemotherapy**
Lauren Kreps
Supervisor: Addison, Christina
- P-73 **Neutrophil extracellular traps in endothelial cell health and function**
Chloé Landry
Supervisor: Burger, Dylan
- P-74 **mTORC1 signalling contributes to dysfunctional interferon-gamma production in M1 macrophages during HCV-mediated liver disease**
David Lawton
Supervisor: Crawley, Angela
- P-75 **Potential use of 17BIPHE2 as a vaginal contraceptive/microbicide**
Seunggee Lee
Supervisor: Tanphaichitr, Nongnuj
- P-76 **Investigating the subcellular localization of parkin in human Substantia nigra**
Nathalie Lengacher
Supervisor: Schlossmacher, Michael
- P-77 **Early low-dose exposure of methylmercury promotes premature neuronal differentiation in embryo and impairs postnatal cortical development**
Joseph Wai-Hin Leung
Supervisor: Wang, Jing
- P-78 **Evaluation of the PREDIGT Score in Identifying Newly Diagnosed Parkinson's Patients Without a Neurological Examination in the DeNoPa and PPMI Cohorts**
Juan Li
Supervisor: Schlossmacher, Michael
- P-79 **Single cell analyses identify a novel muscle stem cell subpopulation**
Alex Lin
Supervisor: Rudnicki, Michael
- P-80 **Low-dose methylmercury promotes prenatal differentiation of mouse cortical precursors by stimulating CREB activation**
Allison Loan
Supervisor: Wang, Jing
- P-81 **Compound C and JZL184-combination treatment promotes ischemia-activated pericyte reprogramming and differentiation**
Margarita Lui
Supervisor: Wang, Jing
- P-82 **Examining the role of LRRK2 in immune modulation of brain health**
Michaela Lunn
Supervisor: Schlossmacher, Michael
- P-84 **Modulating healthy and DMD patient-derived satellite-like cell division with WNT7A and epidermal growth factor**

Maria Madana
Supervisor: Rudnicki, Michael

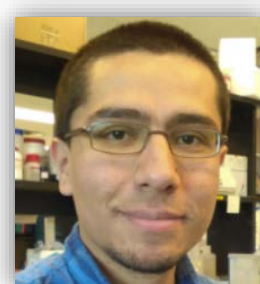
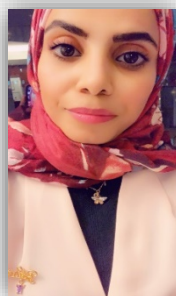
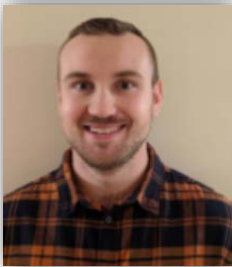
- P-85 **Critical Care in the Obstetrical Population: A six-year, single-centre review on demographics, and outcomes.**
Rebecca Manion
Supervisor: El-Chaar, Darine
- P-86 **The DNA methylation in the regulation of plasma gelsolin expression in ovarian cancer chemoresistance**
Hafiza Bushra Manzoor
Supervisor: Tsang, Benjamin
- P-87 **The inhibitory receptor LAG3 marks a subset of exhausted Natural Killer Cells**
Marie Marotel
Supervisor: Ardolino, Michele
- P-88 **How Developing Mouse Oocytes and Preimplantation Embryos Regulate Intracellular Betaine**
Emily McIntosh
Supervisor: Baltz, Jay
- P-89 **Inhibition of miR-145-5p with an Antisense Oligonucleotide Improves Severity of Experimental Autoimmune Encephalomyelitis**
Kelsea McKay
Supervisor: Kothary, Rashmi
- P-90 **Evaluating the risk of dementia based on adherence to antihypertensive medications in seniors with newly diagnosed hypertension.**
Alixé Menard
Supervisor: Hsu, Amy
- P-91 **Epigenetic dysregulation as a mechanism to explain postoperative natural killer cell dysfunction**
Henna Mistry
Supervisor: Auer, Rebecca
- P-92 **A scoping review of global vaccine certificate solutions for COVID-19**
Salima Mithani
Supervisor: Wilson, Kumanan
- P-93 **Treatment of relapsed small cell lung cancer in the real-world: a comparison of platinum-etoposide rechallenge and cyclophosphamide-doxorubicin-vincristine (CAV) chemotherapy**
Sara Moore
Supervisor: Wheatley-Price, Paul
- P-94 **Podocyte extracellular vesicles are increased in pediatric nephrotic syndrome during nephrotic range proteinuria**
Robert Myette
Supervisor: Burger, Dylan
- P-95 **Higher-order chromatin organization in Progeria vascular smooth muscle cells**
Mzwanele Ngubo
Supervisor: Stanford, William

- P-96 **Assessing the Clinical Relevance of TDP-43 SUMOylation in Amyotrophic Lateral Sclerosis**
Trina Nguyen
Supervisor: Rousseaux, Maxime
- P-97 **IPPK-1 Limits Multicellular Rosette Formation During Convergent Extension in *C. elegans* Ventral Nerve Cord.**
Nathaniel Noblett
Supervisor: Colavita, Antonio
- P-98 **Investigating the mechanism of postoperative CD8+ T cell dysfunction**
Oladunni Olanubi
Supervisor: Auer, Rebecca
- P-99 **The role of pGSN for NK cell Function in Ovarian Cancer Chemoresistance**
Toshimichi Onuma
Supervisor:
- P-100 **Mechanisms of Cell Volume Regulation in Mouse Oocytes and Preimplantation Embryos**
Chyna Ortman
Supervisor: Baltz, Jay
- P-101 **Metabolic defects in brain endothelial cells from 16p11.2 deletion autism mice**
Julie Ouellette
Supervisor: Lacoste, Baptiste
- P-102 **Investigation of cannabinoid CB1 receptor expression in spinal pain processing networks across sex and species**
Jessica Parnell
Supervisor: Hildebrand, Michael
- P-104 **Protocol for the development of guidance for stakeholder engagement in health and healthcare guideline development and implementation**
Janina Ramos
Supervisor: Petkovic, Jennifer
- P-105 **Extracellular vesicles as a novel biotherapeutic for spinal muscular atrophy.**
Charlotte René
Supervisor: Parks, Robin
- P-106 **Carcinoma of the Nasopharynx: A Population-Based Study of the Ottawa Experience**
Nick Sahlollbey
Supervisor: El-Sayed, Samy
- P-107 **Survival of TLX1-Positive T-Cell Acute Lymphoblastic Leukemia is mediated through SWI/SNF**
Rama Sarakbi
Supervisor: Brand, Marjorie
- P-108 **Characterizing the relationship between NK cell function and metabolism in the postoperative period**
Marlena Scaffidi
Supervisor: Auer, Rebecca

- P-109 **Which primary care physicians deliver home visits to their dying patients in Ontario? A retrospective cohort study.**
Mary Scott
Supervisor: Tanuseputro, Peter
- P-110 **The Delivery of Patient Care via the Support Line – Nursing Perspective (REaCT-Support Line Nursing Survey)**
Hely Shah
Supervisor: Mcgee, Sharon
- P-111 **Identifying factors associated with biomedical researchers' adherence to methods to reduce bias in preclinical lab-based studies**
Ayni Sharif
Supervisor: Lalu, Manoj
- P-112 **Small molecule screening for the identification of modifiers favoring beneficial cardiac hypertrophy.**
Anupam Sharma
Supervisor: Megeney, Lynn
- P-113 **Time to press play on stem cell research in the neonatal intensive care unit (NICU): Developing and evaluating video-based educational support for parents considering enrolling their child in a trial of mesenchymal stromal cells for Bronchopulmonary Dysplasia**
Kiran Singh
Supervisor: Thebaud, Bernard
- P-114 **Thyroid Dysfunction After Autologous Hematopoietic Stem Cell Transplant for Autoimmune Indications**
Chloe Smith
Supervisor:
- P-115 **Sepsis-like environment exerts multifaceted influences on innate immune modulation by mesenchymal stem cells**
Yuan Tan
Supervisor: Stewart, Duncan
- P-116 **Inhibiting PI3K? in Myeloid Derived Suppressor Cells as a Therapeutic to Restore Natural Killer Cell Function and Reduce Metastases Following Surgery.**
Gayashan Tennakoon
Supervisor: Auer, Rebecca
- P-117 **Cellular and molecular characterization of Tbx18+ joint stem/progenitor cells**
Bahaeddine Tilouche
Supervisor: Coutu, Daniel
- P-118 **Effect of novel soluble ACE2-Fc variants on blood pressure and albuminuria in mice with angiotensin II-induced hypertension**
Mayra Trentin Sonoda
Supervisor: Burns, Kevin
- P-119 **Glycine transporter GLYT1 is regulated by active suppression in mouse cumulus-oocyte complexes and is required for early embryo survival under osmotic stress in vitro**
Allison Tscherner
Supervisor: Baltz, Jay

- P-120 **Management Strategies in Persons with Inherited Hemophilia Requiring Antithrombotic Therapy: A Scoping Review**
Kelsey Uminski
Supervisor: Khalife, Roy
- P-121 **Exploring the role of alpha-synuclein in transcriptional modulation**
Nicholas Valentino
Supervisor: Rousseaux, Maxime
- P-122 **Facilitating and supporting the engagement of patients, families and caregivers in research: The Ottawa Hospital model**
Shelley Vanderhout
Supervisor: Fergusson, Dean
- P-123 **Circulating Extracellular Vesicles in Patients with Cancer and Venous Thromboembolism**
Ozgun Varol
Supervisor: Burger, Dylan
- P-124 **Enhancing COVID Rehabilitation with Technology (ECORT): Protocol for an open-label, single site randomized controlled trial evaluating the effectiveness of electronic case management for individuals with persistent COVID-19 symptoms.**
Brooklyn Ward
Supervisor: Hatcher, Simon
- P-125 **Dependency of EGFR activation in Vanadium-based Sensitization to Oncolytic Virotherapy**
Boaz Wong
Supervisor: Diallo, Jean-Simon & Nessim, Carolyn
- P-126 **A comparison of isolation methods for the analysis of extracellular vesicles in cerebrospinal fluid using nanoscale flow cytometry**
Fengxia Xiao
Supervisor: Burger, Dylan
- P-127 **Investigating the role of Sox6 and Sox7 in melanoma progression and drug resistance**
Hong Meng Yew
Supervisor: Sabourin, Luc
- P-128 **Treatment of Splanchnic Vein Thrombosis with Anticoagulant Therapy in Adult Cancer Patients: A Systematic Review and Meta-analysis**
Amin Zahrai
Supervisor: Carrier, Marc
- P-129 **Airway recommendations for perioperative patients during the COVID-19 pandemic: a scoping review**
MengQi Zhang
Supervisor: Lalu, Manoj
- P-130 **Defining the living donor transplant evaluation process for optimization of a one-day evaluation program**
Ariana Noel
Supervisor: Ann Bugeja
- P-131 **The BEACON Study: Preliminary results from a pilot randomized controlled trial to evaluate problem solving therapy in men who self-harm.**

Maria Peddle
Supervisor: Hatcher, Simon



Research Day Committee and Volunteers

The Ottawa Hospital Research Institute would like to express its appreciation to members of the Research Day Committee for their dedication and hard work in organizing this event, and to the volunteers, whose assistance we could not do without.

Dr. Paul Albert (Co-chair)
Dr. Justin Presseau (Co-chair)
Dr. Jay Baltz
Amelia Buchanan
Dr. Angela Crawley
Chanèle Cyr Depauw
Jaahnavi Dave
Jenn Ganton
Milad Hamwi
Leah Labib
Dr. Ian Lorimer

Dr. Tim Ramsay
Dr. Luc Sabourin
Dr. Duncan Stewart
Jennifer Valentino
Nicol Lum
Sarah Schlievert
Alison Cudmore
Chris Page
Colleen Ford
Vinay Dandawati